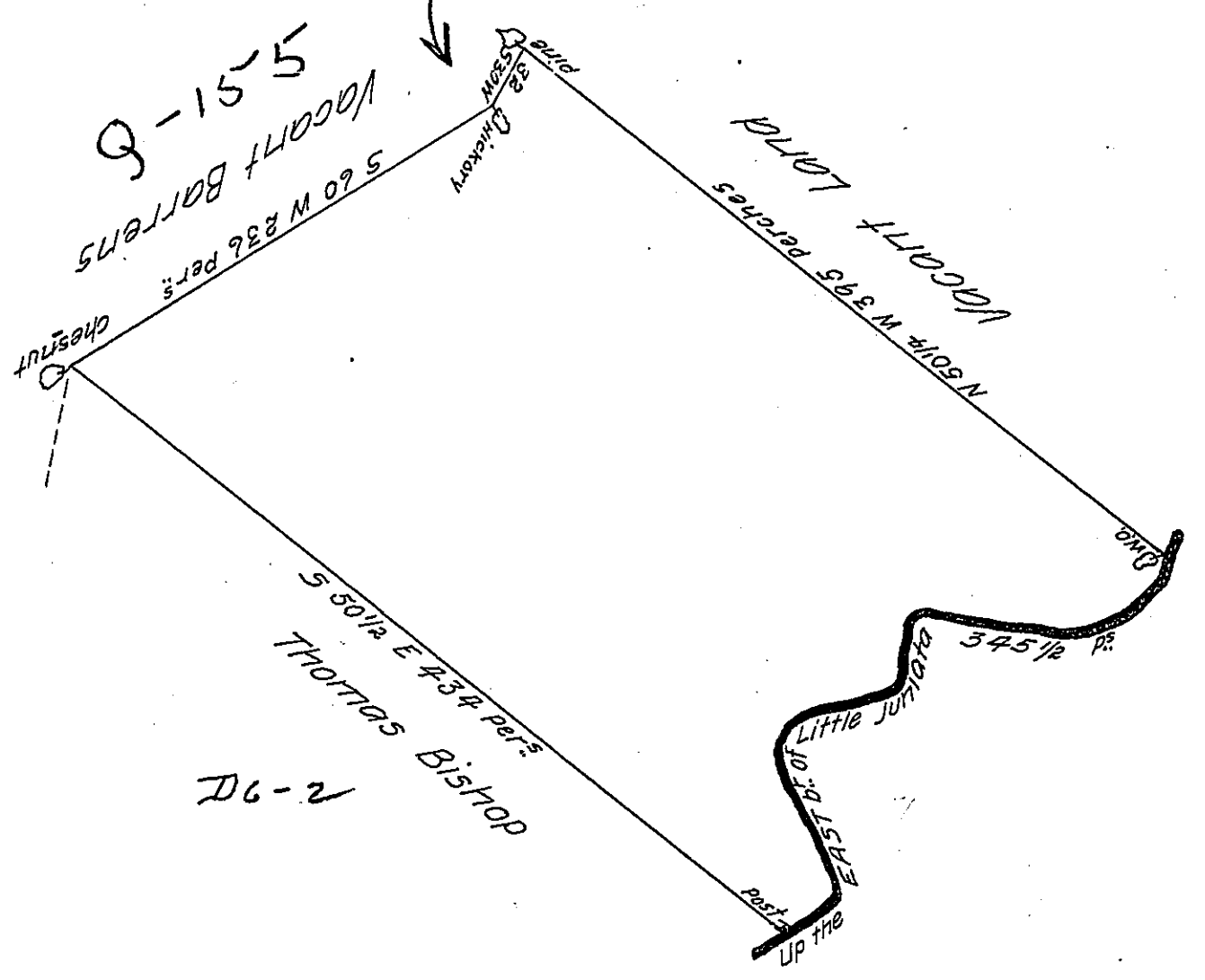


FORM NO 1.

D-3-278



A draught of a tract of land situate on the east branch of Little Juniata — in the County of Cumberland containing five hundred and fifty one acres & 75 P's and the usual allowance of six acres P Ct for roads &c? surveyed the 23^d day of October 1766 for John Wineman in pursuance of a warrant dated the first day of ~~October~~ August 1766

To John Lukens Esq^r
Surveyor General

P^r Richard Tea
Dep^y Survey^r

IN TESTIMONY that the above is a copy of the original remaining on file in the Department of Internal Affairs of Pennsylvania, made conformably to an Act of Assembly approved the 16th day of February, 1833, I have hereunto set my Hand and caused the Seal of said Department to be affixed at Harrisburg, this first day of May 1907

Isaac D. Brown
Secretary of Internal Affairs.